

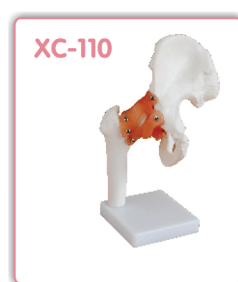
**XC-109 Life-Size Shoulder Joint**

Demonstrates abduction, adduction, anteversion, retroversion and internal / external rotation. Includes flexible, artificial ligaments. Life size, on stand.



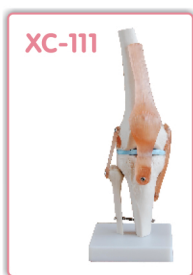
**XC-110 Life-Size Hip Joint**

Demonstrates anteversion, retroversion, abduction, and internal / external rotation. Includes flexible, artificial ligaments. Life size, on stand.



**XC-111 Life-Size Knee Joint**

Demonstrate abduction, anteversion, retroversion internal / external rotation. Includes flexible, artificial ligaments. Life size, on stand.



**XC-112 Life-Size Elbow Joint**

Demonstrates abduction, anteversion, retroversion, internal / external rotation of the radius. Includes flexible, artificial ligaments. Life size, on stand.



**XC-113 Life-Size Foot Joint**



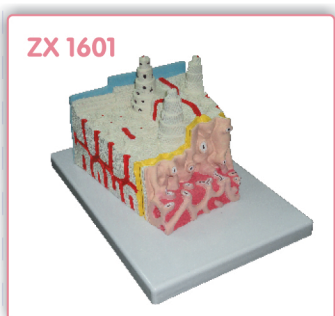
Demonstrate all the foot functionality and the external anatomical structures. Made of PVC Plastic, life size on stand.

**XC-114 Life-Size Hand Joint**



Demonstrate all the hand functionality and the external anatomical structures. Made of PVC Plastic, life size on stand.

**ZX 1601 Bone Microstructure**



**XC-113A Life-Size Foot Joint with Ligaments**

Demonstrates all of foot functionality and the external anatomical structures, including flexible, artificial ligaments. Made of PVC plastic. Natural size.



**XC-114A Life-Size Hand Joint with Ligaments**

Demonstrates all of hand functionality and the external anatomical structures, including flexible, artificial ligaments. Made of PVC plastic. Natural size.

